

GOtrend
金汐奖[®]

2020

金汐年鉴

<http://www.gotrend.cn>

2020 GOtrend 金汐奖

GOtrend Annual Theme



家居设计需要重回启蒙。

—— 许柏鸣

《新时代中国家具设计要重回启蒙》2017年12月

Home design needs to return to enlightenment.

—— Boming, Xu

《New Age Chinese Furniture Design Is Back to Enlightenment》

2017.12

金汐奖介绍

Dissertation Of The Gotrend

· 当代中国家具设计视野还不宽广、历史高度尚未建立、设计理论还很稚嫩且未成体系。

· 传统思维与想当然的做法根深蒂固。

· 我们需要重新定义设计。

· 从本质上讲，设计是在行动之前先想好该怎么做，设计是把事情做得更好的途径，设计要从战术层面上升到战略层面来统筹。

· 设计不仅仅是把方案或做出原型就交给生产部门了事，而是要在产业链各个环节中都负起责任。

· 设计不仅仅是产品，还有服务，产品加服务等于解决方案。

· 设计不仅仅满足生产与销售，还要贯穿整个生命周期。

· 设计不仅仅服务于商业世界，还得承担社会责任，设计必须满足经济、社会和环境的可持续发展。

· 从这个意义上来看，也许我们需要重回启蒙。

· The contemporary Chinese furniture design vision is not wide, the historical height has not been established, the design theory is still immature and unstructured.

· Traditional thinking and taken for granted are deeply ingrained.

· We need to redefine design.

· In essence, design is to think about what to do before the action. Design is a way to make things better. Design must be coordinated from the tactical to the strategic level.

· Design is not only a matter of handing over the scheme or making a prototype to the production department, but also has to take responsibility in all links of the industry chain.

· Design is not just a product, but also a service. Product plus service equals a solution.

· Design not only meets production and sales, but also throughout the entire life cycle.

· Design not only serves the business world, but also bears social responsibility. Design must meet the sustainable development of economy, society and environment.

· In this sense, perhaps we need to return to Enlightenment.

奖项设置

GOtrend Awards Setting

90个通过 39个入围 17个奖项

NO.	基础类奖项 Basic Category Awards		海选 Primary Select	入围 Finalist	金奖 winner
1	最佳古典产品 Best Classical Product	仅限参展企业 only Exhibitors	10	3	1
2	最佳现代时尚产品 Best Modern Fashion Product	仅限参展企业 only Exhibitors	10	3	1
3	最佳软体沙发 Best Soft Sofa	仅限参展企业 only Exhibitors	10	3	1
4	最佳软体寝具 Best Soft Bedding	仅限参展企业 only Exhibitors	10	3	1
5	最佳儿童产品 Best Children's Product	全社会 - 要求邮寄到位 Whole society(require presence of product)	5	3	1
6	最佳生活用品 Best Daily Use	全社会 - 要求邮寄到位 Whole society(require presence of product)	5	3	1
7	最佳空间设计 Best Space Design	仅限参展企业 only Exhibitors	5	3	1
8	最佳灯具 Best Lights	全社会 - 要求邮寄到位 Whole society(require presence of product)	5	3	1
9	最佳坐具 Best Seats	全社会 - 要求邮寄到位 Whole society(require presence of product)	10	3	1
10	最佳全屋解决方案 Best Whole-House Solution	仅限参展企业 only Exhibitors	5	3	1
11	最佳智能产品 Best Intellectual Product	全社会 - 要求邮寄到位 Whole society(require presence of product)	5	3	1
12	最佳服务案例 Best Service	全社会 - 要求发送文件 Whole society(request to send file)	5	3	1
13	最佳办公解决方案 Best Office Solution	全社会 - 要求发送文件 Whole society(request to send file)	5	3	1
进阶类奖项 Advanced Awards					
14	可持续设计大奖 Sustainable Design Award		-	-	1
15	年度设计师 / 团队 Best Designer/Team		-	-	1
16	明日之星 Best Emerging Designer		-	-	1
17	黑金奖 Black Gold Award		-	-	≤ 1

评审标准

GOtrend Format System Assessment Criteria Category

海选通过标准 / Inclusion criteria

score of 10 points	外观造型	——作品造型外观是否舒适、美观，尺寸比例是否合理。
score of 20 points	使用功能	——作品是否考虑到功能的完备性、创造性。
score of 30 points	人性化设计	——人体工学是否合理，是否考虑到使用过程的安全性和舒适性。
score of 30 points	环境友好	——使用材料、生产过程、包装等是否环境友好。
score of 10 points	整体性	——产品作品：考量人 - 环境 - 家具 - 家居用品的协调关系；空间作品：考量对内部呈现产品和使用者的积极作用；
score of 10 points	Appearance	whether the product appearance is comfortable and beautiful, and whether the size ratio is reasonable.
score of 20 points	Function	whether the product takes the completeness and creativity of the function into account.
score of 30 points	Humanized design	whether ergonomics is reasonable, whether it takes into account the safety and comfort in using process.
score of 30 points	Eco-friendliness	whether it is eco-friendly in materials, production process, packaging, etc.
score of 10 points	Integrity	whether the product takes into account the relationship between people, environment and furniture.

入围及获选标准 / Standard for finalist and winner criteria

其一，考量参评作品是否有完整的商业设计思维和创新设计思维。

1. 作品是否有清晰的定位；
2. 作品是否对特定目标群体有设计的响应；
3. 是否准确完整地表达品牌价值理念并传达给客户；
4. 是否通过设计降低企业成本、提高经济效益；

其二，考量参评对象的设计理念。

1. 是否具有正向积极的设计理念，具有普世价值的设计内涵
2. 是否在可持续性设计上有突出的表现
3. 是否在人性化设计上有突出的表现
4. 是否在新工艺、新材料、新技术上有突出的表现
5. 是否具有独特的创新性
6. 是否是能推动行业进步以及引发行业进化的思考

Industrial Design Awards: mainly evaluates whether the eligible works have complete commercial design thinking and innovative design thinking.

1. Whether the product has a clear positioning;
2. Whether the product has a design response to a specific target group;
3. Whether accurately and completely expresses brand value concept and convey it to customers;
4. Whether reduces enterprise costs and improves economic benefits through design;

Original Design Awards: mainly evaluates the design concept of the participants.

1. Whether there contains any positive design concept with a universal design connotation.
2. Whether there is outstanding performance in sustainable design.
3. Whether there is outstanding performance in humanized design.
4. Whether there is outstanding performance in new processes, new materials and new technologies.
5. Whether it is unique and innovative.
6. Whether it can promote industry progress and trigger industry evolution.

终审评委

GOtrend Judge



曹永宏

亚振家居总工程师

上海非物质文化遗产品牌
世界技能大赛家具组指导专家



吕永中

半木品牌创始人

中国建筑学会室内设计分会 副理事长
中国陈设艺术专业委员会 副主任委员



林作新

北京林业大学工学博士

教授

美国密歇根州立大学博士后、访问学者
新加坡南洋大学学士、荣誉学士
新加坡家具协会现代化的创始人
曾任两届亚洲家具联合会会长。



于历战

清华大学美术学院环境艺术

设计系副教授

清华美院家具设计研究所 所长
中国家具协会 常务理事
广东家具协会 常务理事
中国室内装饰协会家具设计研究学会
副会长
中国室内装饰协会设计专业委员会
委员
中国建筑师学会室内设计分会 会员
中国工艺美术学会明式家具协会 理事



王旭

资深媒体人

中国设计出版行业的先锋人物之一



曾孜荣

中信美术馆执行馆长

中国艺术普及实践者
中信美术馆执行馆长，曾任今日美术馆副馆长、《东方艺术》杂志主编。当代艺术专业主讲人，具有 20 年艺术普及工作经验，长期致力于中外艺术的普及、教育出版工作。编著有《发现中国画的秘密》、《宋画三讲》、《中国名画绘本》、《墨·中国艺术启蒙》等众多艺术普及书籍。

2020 年金汐奖获奖名单

List of GOtrend 2020 Winners

排名不分先后

2020 年金汐奖获奖名单

List of GOtrend 2020 Winners

最佳古典套房家具 | Best Product-Classic Suite

金奖 Best of the Best

东阳市恒达木业有限公司 - 《今至》客厅

优秀奖 Excellent

深圳市新南天实业有限公司 - 释凡沙发

东莞市界象家具设计有限公司 - 思莲屏风

最佳时尚套房家具 | Best Product-Modern Suite

金奖 Best of the Best

柒木设计有限公司 - 扇变屏风 2.0

优秀奖 Excellent

深圳市诺亚创盟家具有限公司 - WD816

浙江维拉利家具有限公司 - 西西里公主梳妆台

最佳软体沙发 | Best Product-Upholstered Sofa

金奖 Best of the Best

李希米设计工作室 - 结构沙发

优秀奖 Excellent

上海界意家具有限公司 - 云沙发

诺佳府邸家具 - 喜悦 阅华 沙发

最佳软体寝具 | Best Product-Bedding

金奖 Best of the Best

塔拉蒂安家居用品(成都)有限公司 - 塔拉蒂安长生簧天然
乳胶定制床垫系列

优秀奖 Excellent

浙江梦神家居股份有限公司 - 国标垫

深圳市梦甜甜家具公司 - 4088 床

最佳儿童产品 | Best Children's Product

金奖 Best of the Best

上海咫尺贸易有限公司 - 小大人椅

优秀奖 Excellent

上海无意家居有限公司 - 太空基地床

江西分寸家具有限公司 - 彩虹婴儿床

最佳生活用品 | Best Daily Use

金奖 Best of the Best

北京通元文化传播有限公司 - Solar

优秀奖 Excellent

北京通元文化传播有限公司 - B-Mine

杭州棣凡科技有限公司 - GEM 体验茶器

最佳灯具 | Best Lights

金奖 Best of the Best

广东宝照科技有限公司 - 留白

优秀奖 Excellent

广州本土创造文化发展有限公司 - 8- 水磨石落地灯

深圳市上时家居科技有限公司 - “望”

最佳坐具 | Best Seats

金奖 Best of the Best

浙江理工大学家具设计中心 - 1900 椅

优秀奖 Excellent

SDE lab - MOA MOA

Marmo - Zafra

最佳空间设计奖 | Best Space Design

金奖 Best of the Best

东阳市东禺红木家具有限公司 - 南元

优秀奖 Excellent

斯图雅轩(深圳)办公空间设计建造有限公司 - free.working

上海玛祖铭立家具(集团)有限公司 - MATSU

最佳智能产品 | Best Intellectual Product

金奖 Best of the Best

香港舒是家居用品集团有限公司 - 图灵 -03

优秀奖 Excellent

广州本土创造文化发展有限公司 - 昱 太阳能无线户外庭院灯

浙江茶荟美茗家居有限公司 - 小明茶水车

最佳全屋解决方案 | Best Whole-House Solution

金奖 Best of the Best

海蒂诗五金配件(上海)有限公司 - 18m²就够了!

优秀奖 Excellent

仁豪家居 - 仁豪新中式

陕西南洋迪克家具制造有限公司 - 造极

最佳服务案例 | Best Service

金奖 Best of the Best

浙江理工大学家具设计中心 - 茶荟 × 为来 茶家具设计

优秀奖 Excellent

广州乐高建筑科技有限公司 - 瓦

宅度设计装饰工程(深圳)有限公司 - 看风景的别墅

最佳办公解决方案 | Best Office Solution

金奖 Best of the Best

北京沃科优品家具有限公司 - POP

优秀奖 Excellent

广州莱特斯家居有限公司 - SOK

上海玛祖铭立家具(集团)有限公司 - VMLY&R 北外滩办公室

可持续设计大奖 | Sustainable Design Award

广州本土创造文化发展有限公司

8- 水磨石落地灯

周银坤

明日之星 | Best Emerging Designer

柳毅

SDE lab

最佳设计师 / 团队 | Best Designer/ Team

浙江理工大学家具设计中心

为来设计工作室

组委会黑金奖 | Black Gold Award

空缺

GOtrend
金汐奖最佳古典产品
The Best of Best
2020

《今至》客厅

东阳市恒达木业有限公司



第三方机构设计：觉美设计

通过窗户看风景，透过心灵品世界。《今至》客厅以中国建筑为灵感来源，斗拱为底座，窗户为造型特征，花繁为简，润古通今。由此，享当代气质，品文化。

See the scenery through the window and taste the world through the heart. "Today to" the living room is inspired by Chinese architecture, with the bucket arch as the base, the windows as the modeling features, the flowers as simple, and the ancient and modern run. Therefore, enjoy the contemporary temperament and culture.

GOtrend
金汐奖最佳古典产品
Excellent
2020

释凡沙发

深圳市新南天实业有限公司

第三方机构设计：习汉设计·周敏

东方的骨，西方的形，二者相融，给予使用者释去凡尘世事的体验，故名释凡。吸收国外软体沙发的特点，将大面积软包与中式家具木材材质的表达相结合，木与软包的结合贯穿整体。并在扶手处强化中式风格的表达，并以架空的形式打破过于饱满的侧面，使得沙发整体既通透，又不失软体沙发的饱满感与厚重感。

The combination of Eastern bone and Western shape gives users the experience of freeing the world, hence the name of freeing. Absorb the characteristics of foreign soft sofa, combine the large area soft bag with the expression of wood material of Chinese furniture, and the combination of wood and soft bag runs through the whole. And in the armrest to strengthen the expression of Chinese style, and in the form of overhead to break the too full side, so that the sofa as a whole is transparent, without losing the full and thick feeling of the soft sofa.



GOtrend
金汐奖®最佳古典产品
Excellent
2020

思莲屏风

东莞市界象家具设计有限公司



设计：王丰华

唐代诗人王勃在《采莲曲》中写到“花复莲花，花叶何稠叠；叶翠本羞眉，花红强如颊；佳人不在兹，怅望别离时；牵花怜共蒂，折藕爱连丝。”睡莲寓意着纯洁、端庄、素雅、美好！此屏风的设计灵感正是来源于睡莲，其基本外形采用传统的插屏形式，中间屏风运用睡莲的造型，屏风中间嵌若隐若现山水布纹。

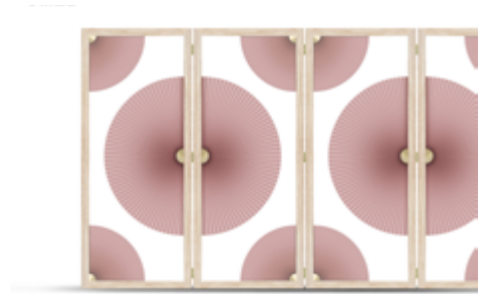
Wang bo, a poet in the tang dynasty, wrote in his lotus collection that the flowers and leaves of the lotus flower were thick and folded. Leaf cuiben shy eyebrow, bonus as strong as cheeks; Beauty is not here, look away; Pull the flower pity altogether pedicle, folding lotus root love connect silk water lily implication is pure dignified but elegant beautiful! The design inspiration of this screen comes from water lily exactly, its basic appearance USES the form of traditional insert screen, the modelling of water lily is applied in the middle screen, the cloth grain of landscape is embedded in the middle of screen





扇变屏风 2.0

柒木设计有限公司



设计：林宜贤设计团队

如何把文化些的冲突转换成另一种的共存？我们生活环境中存在着许许多多的变数，现在的室内空间所需要的会是更具变换性，更可以兼容以及变换环境氛围的物品。纸扇，具变化性，有在极简与繁盛之间游走的能力，屏风，具延展性，可以创造新的空间面貌。我们试图将人的两种冲突个性以及文化表征带入产品中：东方的内敛与西方的外放。当纸扇与屏风共存，东方的内敛与西方的外放，我们提供了一个冲突的平衡。当纸扇收纳于铁框内时，我们拥有的是一个极简，虚的负空间。轻盈的画框感，在视觉上仍具有区隔的样貌。而当把匡中的扇面释放出来时，一种华丽的，具东方经典风情的屏风，增加了空间中虚与实的魅力。90度或是180度的扇子延展，让The new old divider的样貌百看不厌。扇变屏风2.0版本材料的升级，扇面也采全面防水布料，并且可以自行更换颜色适用每个空间风格。

How can cultural differentiations coexist to inspire new forms? Our living environments are full of variables, requiring our objects to be versatile in terms of function, visually coherent across diverse settings, and able to affect the atmosphere of spatial environments. The paper fan incorporates transformative functions, allowing it to exist both minimally and decoratively. By varying its convertible features, the screen is able to create different spatial experiences. In our products, we aspired to unify the contrasting personalities and representations between two cultures. The subtlety of the East and the boldness of the West are balanced and symbolized through the marriage of the paper fan and the frame structure. This duality is also mirrored by the divider's ability to exist across the spectrum between minimalist and decorative. When the paper fans are collapsed within the metal frames, the simplistic aesthetic creates a sense of ethereality which visually suggests at spatial separation; when the fans are allowed to expand into space another statement can be made, one that reflects the classic beauty of oriental aesthetics while providing an element of ornamentation to its environment. The transformative nature of The New Old Divider allows the user to easily maintain a sense of freshness in any space through varying configurations of the paper fan. Uniting minimalism and complexity through division. Hollow frames and paper fans bring this divider from its classical Oriental references to the contemporary environment. The decorative semi-circles are optionally fanned out, providing possibilities between representational or physical spatial division. The New Old Divider is a simple intervention that introduces the element of ornamentation.

GOtrend
金汐奖最佳现代时尚产品
Excellent
2020

WD816

深圳市诺亚创盟家具有限公司



第三方机构设计：王立

创新点：

1. 实现整体家居风格情景变奏体验
2. 实现单体家具互联互通的系统灯光控制
3. 实现多种科技创新材料（合金铝、烟熏木、陶瓷片）极窄高精密智造“睿”系列是对“极简生活美学”的致敬。是诺亚·宽度创造的标志性产品，该系列强调理性与功能，重视家具、环境与使用者之间的交流与互动。外部极致、纯净的物理空间和内在纯粹与品质的生活理念，让舒适家居空间已不仅局限在家具产品本身，而是更深入到现代家居生活方式的研究当中，以个性独立和勇于创新的跨界思维，创造一个全方位，高品质的现代家居空间。

Innovation:

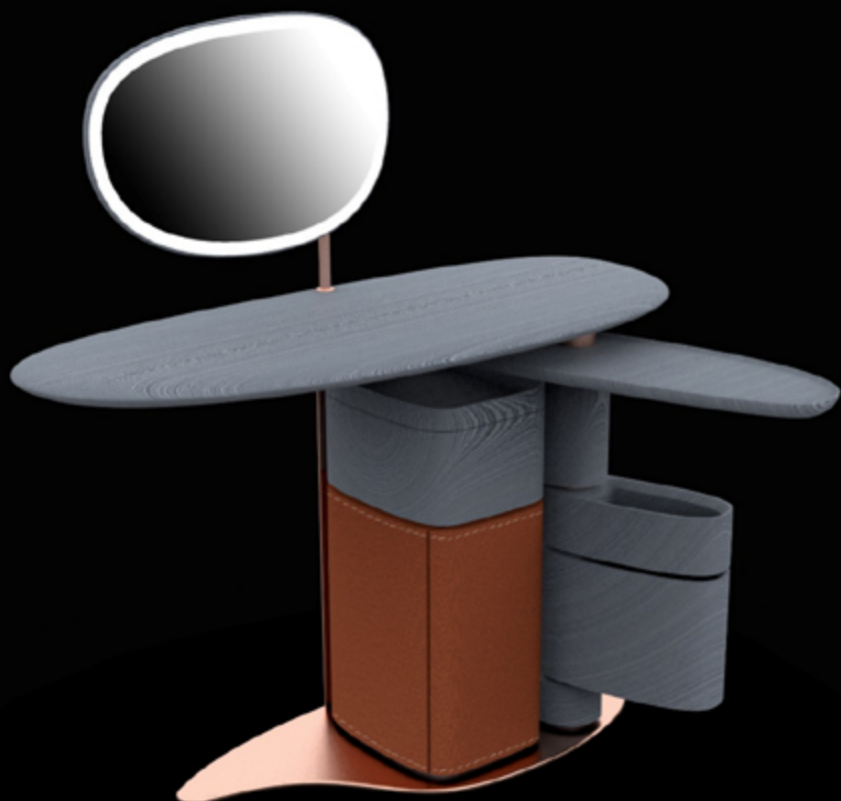
1. Realize the experience of changing the whole home style scene.
2. The system light control to realize the interconnection of single furniture.
3. Realize narrow and high-precision intelligent manufacturing of a variety of scientific and technological innovative materials (alloy aluminum, smoked wood, ceramic chips) "Rui" series is a tribute to "minimalist life aesthetics". It is a landmark product created by Noah with the series, which emphasizes rationality and function, communication and interaction among furniture, environment and users. The external extreme, pure physical space and the internal pure and quality of life concept make the comfortable home space not only limited in the furniture product itself, but also go deeper into the research of modern home life style, and create a comprehensive, high-quality modern home space with independent personality and innovative cross-border thinking.





西西里公主梳妆台

浙江维拉利家具有限公司



设计：列汉

设计灵感来自意大利美丽的西西里岛，如同《西西里的美丽传说》电影中的女主角一样，寓意女人永远阳光美丽动人。整体设计一切从女性梳妆的功能角度出发，从面膜低温储藏、高瓶乳液收纳（低层）、面霜中层收纳、口红与笔刷活动盘，等梳妆功能的通盘考虑。在应用中需要直观的铺展对应化妆品，于是主体采用旋转结构，可以更好的看到化妆保养品。同时整体采用非对称的力学设计，可以扩大单边坐位留够空间，也给使用者带来有趣体验。同时为了方便随手取拿，加入一个扩大桌旋转辅助台。使操作面增大 1/3。特别是对镜面采用后发光处理，可以更好的均匀采光。面板与镜子采用自然鹅卵石的形态，更符合女性使用者曲线偏好。



结构沙发

李希米设计工作室



设计：李希米

结构沙发由金属框架和软包两部分结合，沙发使用者及沙发自身的重量被分散在金属的支撑结构上，让人视觉可以感受到直观的力量感和冲击力，而相对应的软包部分则柔软而又富有良好的使用体验。

—

The structure sofa is composed by metal frame and soft package. The weight of the sofa user and sofa itself is scattered on the metal support structure, which allows people to visually feel the intuitive sense of strength and impact, while the corresponding soft package part is soft and full of good use experience.





云沙发

上海界意家具有限公司



设计：任鸿飞

「云」沙发，是一组沙发，包含双人、三人。设计通过饱满圆润的三维立体的变化曲线，勾勒出富含温暖情感的元素，为空间注入亲切欢迎拥入的感觉。

Cloud sofa is a series, include 2 seater and 3 seater option. Through the full and round three-dimensional variational curve, the design outlines the elements rich in warm welcome feelings, and inspiring the tired travelers who just come back.



GOtrend
金汐奖最佳软体沙发
Excellent
2020

喜悦 阅华 沙发

诺佳府邸家具



第三方机构设计：心石设计

实木底座像生长的树枝形成一个坚实稳固的承托结构，金属的增加与无声处流露出精致的品味，彰显产品的价值和轻奢感，实木框架结合软包，整体圆润富有亲和力、舒适感，在拙朴中显露着精致灵动的光晕，尽显材质的融合之美。

The solid wood base forms a solid supporting structure like growing branches, the addition of metal and silence exudes exquisite taste, highlighting the value and lightness of the product, and the solid wood frame combines with a soft bag, overall Mellow full of affinity, comfort, in the humble reveal a delicate and flexible halo, show the beauty of material integration.

GOtrend
金汐奖最佳软体寝具
The Best of Best
2020

塔拉蒂安长生簧天然乳胶定制床垫系列

塔拉蒂安家居用品(成都)有限公司

设计: 罗平

这款床垫代表塔拉蒂安“长生簧天然乳胶定制床垫系列”。该系列床垫已在中国申请两个实用新型专利。用户可自由选择天然乳胶厚度及弹簧高低进行搭配,并方便清洗布料,更新床垫内芯,如更换表层天然乳胶。该款产品采用极简设计,布料使用高级3D针织布,拉链由YKK天津工厂生产,钢丝从土耳其进口。床垫由全拆洗的内外套组成,其中内套为双层拉链结构,床垫内芯由创新的独立袋装簧和天然乳胶片材2种极简材料组成。材料间不使用任何胶水,海绵、泡沫。创新床网解决了市面上无纺布/AP无纺布使用寿命不长的问题,同时解决了国外手工真布袋簧的效率问题。此外透明、创新的结构设计,引导寝具行业向透明化,品质化,以用户使用、服务为主导的理念发展。

This mattress represents the THARATHIAN "long spring natural latex mattress customization series". This series of mattress has been applied for two utility model patents in China. Users can freely choose the thickness of natural latex and the height of the spring to match, and convenient to clean the cloth, to update the mattress core, such as change the latex on the surface. The product has a minimalist design, the fabric is made of premium 3D knit fabric, the zippers are made by YKK tianjin factory and the steel wire is imported from Turkey. The mattress is made up of inside and outside cover, which is a double-layer zipper structure. The mattress core is made up of innovative independent bag spring and two kinds of minimalist materials of natural latex sheet. Materials do not use any glue, sponge, foam. The innovative bed net solves the problem of short service life of non-woven fabric /AP non-woven fabric in the market, and also solves the efficiency problem of foreign hand-made real cloth bag spring. In addition, the transparent and innovative structural design guides the bedding industry to become transparent and quality-oriented, with the concept of user use and service as the leading development.



国标垫

浙江梦神家居股份有限公司



设计：郭宁

梦神作为中国床垫行业标准主要起草者，针对于当前床垫行业标准混乱，产品严重同质化的现象，匠心推出“梦神国标垫”，旨在让床垫更贴合消费者个性化、自由化需求。国标垫创新组合睡眠魔方，根据用户体型变化及个人需要调节不同软硬组合，一垫多用，玩转多样睡感。在用料选材上，每一细节皆遵循国际标准品质，在舒适、环保、健康等方面都力求完美。整垫选用透气，有氧离子循环材料，最大程度保证各种材料的活性。创新组合 3D 乳胶，记忆自然身体曲线，FR 多点袋装弹簧系统，上千个贴合缓冲点，消除睡伴干扰。

As the main drafter of mattress industry standards in China, aiming at the current chaotic mattress industry standards and serious homogeneity of products, mengshen has launched the "national standard pad of mengshen", aiming to make the mattress more suitable, personalized and liberalized. The mattress make innovation and combination with sleep Rubik's cube, according to the consumer's body shape and personal needs to adjust different combinations of softness and hardness, a pad for multi-purpose, play a variety of sleeping. In the selection of materials, every detail is in accordance with international standards of quality which conform to the environmental protection, health and other aspects. The whole pad is made of breathable and aerobic ion circulating materials to ensure the activity of various materials to the greatest extent. Innovative combination of 3D latex, memory of natural body curves, FR multi-point pocket spring system, thousands of bonding buffer points to eliminate sleep partner interference.

GOtrend
金汐奖最佳软体寝具
Excellent
2020

4088 床

深圳市梦甜甜家具有限公司



设计：王治平 Alfred

深圳，正在成为世界的中心。

深圳用 40 年的发展，造就了一个奇迹。新聚科技 年的发展，造就了一个奇迹之中，由衷地热爱深圳，也培育了新聚公司的发展。

在深圳成立 40 年的发展，造就了一个奇迹。新聚科技（深圳）有限公司身处这个奇迹之中，由衷地热爱深圳，深圳也培育了新聚公司的发展。

在深圳成立 40 周年大庆的年份新聚科技（深圳）有限用 4088 床这款产品，表达了对深圳的热爱与祝福。

深圳庆祝成立 40 周年之际，到处飘动的彩旗和荡漾的笑声，是各行各业兴旺的展现和每个人发自内心的表达，这里有奋斗者的自豪，也有成功者的喜悦，匆匆的人流与飘荡的彩旗，幻化成设计的灵感。4088 床头几条飘动的弧线，几块不同的颜色，就是人潮在涌动彩旗在飘舞，用不规则的曲线分割矩形的床头，使平淡的床头产生了动感和节律，分区的位置和比例，也不破坏床的使用功能。

4088 床承载着深圳“设计之都”的美誉，用简约的手法，轻松的笔触，勾勒出精练休闲的款式，富有深圳精英阶层的气质与时尚；薄而细腻的床头，窄而高挑的床邦，让整个床精致而秀气，适应深圳人简洁高效的生活方式。

4088 床为深圳庆祝成立 40 周年而来。

GOtrend
金汐奖最佳儿童产品
The Best of Best
2020

小大人椅

上海咫尺贸易有限公司



设计：吱音团队

小大人椅的 size 有点特别。它既属于小大人，也属于大小孩。枝芽发现，当大人们陪伴孩子玩耍，想要“平起平坐”地沟通交流时，很少有家具能满足这样长时间的陪伴。成人座椅对于孩子而言太高，不能自由地使用，儿童座椅对于大人而言又太小，不宜久坐。我们适当调整了普通儿童座椅的高度和坐深，使得小大人椅在满足孩子正常使用的同时，也能长时间提供给大人舒适的坐感。枝芽想通过小大人椅的设计，让相互陪伴的亲子时光能够更久一些。

Little Somebody Chair has a special size. It belongs to both kidults and little big man. Ziaa found that when adults accompany their children and communicate equally, few furniture can satisfy such a long time companionship. Adult seats are too high for children to use freely and child seats are too small for adults to sit for long. We appropriately adjusted the height and depth of the ordinary child seat. Thus, while satisfying the normal use of the child, the Little Somebody Chair can provide adults with a comfortable experience during a long-time-sitting. We hope to make the time of parent-child companionship longer through Little Somebody Chair.



GOtrend
金汐奖®最佳儿童产品
Excellent
2020

太空基地床

上海无意家居有限公司



设计：董智鑫

这是一款具备多种功能,且“可变形”的儿童床。纵观目前市场上大多款式的儿童床,样式可以说是丰富多彩:有款式很简单的单体床款;有萌萌卡通风的卡通款;也有收纳功能比较强大,但整体造型比较臃肿笨重的箱体床款..。但是总是偏向于一端,比较难在简单外形跟收纳功能中间找一个平衡。现在很多家庭,因为房子户型的限制,需要一款收纳功能比较强大的儿童床,作为孩子来说,首先床头的部分,一定要有比较充足得收纳空间,可以放置自己的东西。最好还有一个比较隐秘得空间,可以藏一些不想被爸爸妈妈看到得小玩意,谁还没有个有小秘密的童年呢。针对家长和孩子的两个角度,这款多功能儿童床,首先,可以具备两种形态,一是简单轻巧的单体床形态,二是收纳功能强大,可以根据用户自己的需求,添加不同的功能部件。其次针对孩子和家长的使用习惯,功能部件分成了四部分,分别是床尾的收纳柜,床侧的收纳抽屉和靠近床头带有床头柜功能的抽屉,还有床头后面的滑柜。床头后面的滑柜分为上中下三层,是为了方便满足床头的收纳功能,靠近床头带有床头柜功能的抽屉,是对传统抽屉的一个创新,既有抽屉的收纳功能,也有床头柜的功能,用这个床,你可以少买两个床头柜。靠近床尾的抽屉,和床尾的收纳柜可以摆放一些不常用东西。床靠板后面的隔板,因为要同时满足单体床和箱体床的设定,做了一个尾部翻折的设计,满足不同的宽度需求。用户可以根据自己的情况和使用习惯,自由选择要添加的部件。这款床,没有太多偏幼儿的东西,可能不那么的可爱,但是现在孩子成长的快,希望这款床,可以陪伴孩子更久一些 ...

This is a multi-functional and "deformable" crib. Looking at most of the cribs on the market today, the styles can be said to be colorful: there are simple single-bed styles; there are cartoon styles with cute cartoon styles; there are also powerful storage functions, but the overall shape is bloated and bulky Cabinet bed ... However, it is always biased towards one end, and it is difficult to find a balance between simple appearance and storage function. Many families now need a cot with a powerful storage function due to the limitation of the house type. As a child, first of all, there must be enough storage space at the head of the bed to store your own things. It's better to have a more secret space, you can hide some gadgets that don't want to be seen by parents, who hasn't had a childhood with a little secret. For two perspectives of parents and children, this multifunctional crib can first have two forms, one is a simple and lightweight single bed form, and the other is a powerful storage function, which can be added according to the user's own needs. Features. Secondly, according to the habits of children and parents, the functional parts are divided into four parts, which are the storage cabinet at the end of the bed, the storage drawer near the bed, the drawer with the nightstand function near the bedside, and the slide behind the bedside. The sliding cabinet behind the bed head is divided into three layers: upper, middle and lower. It is to facilitate the storage function of the bed head. The drawer close to the bed with a bedside table function is an innovation of the traditional drawer. It has both the storage function of the drawer and the The function of the bedside table. With this bed, you can buy two bedside tables. Drawers near the end of the bed and storage cabinets at the end of the bed can be used to store things that are not commonly used. The partition behind the bed backboard is designed to meet the requirements of the single bed and the box bed at the same time, and has a design with a tail fold to meet different width requirements. Users can freely choose the parts to be added according to their own conditions and usage habits. This bed does not have too many children's things, it may not be so cute, but now the child is growing fast, I hope this bed can accompany the child longer

GOtrend
金汐奖®最佳儿童产品
Excellent
2020

彩虹婴儿床

江西分寸家具有限公司



设计：张钦裕

婴儿床作为孩子温暖的小窝，它充满着欢声笑语、也见证着成长。而婴儿床的使用年限却无法让它与孩子写相伴。针对这一点，特地的做一些改变，使它的使用年限增加功能也进行一些改变。床侧有两个调节点，可以调节护栏的高度去使用，直到无法作为床去使用它时。加上软包，便可成为孩子房间的休闲沙发。继续陪伴孩子成长。

The crib is a warm nest for children, full of laughter and witnessing growth. The life of a crib does not allow it to accompany writing. In view of this, specially make some changes, make its use life increase function also make some changes. Bed side has three adjustment points, can adjust the height of the guardrail to use, until it can not be used as a bed. Add soft bag, can become the recreational sofa of the child room. Continue to accompany the child's growth.





Solar

北京通元文化传播有限公司



设计：史慧

作品融合现代、空间和几何关系。将艺术融入生活，以物抵心。旨在表达“趣味性在人们的生活中无处不在”。纯粹的几何元素构成了厨房用具的简约艺术形式，为“厨房重地”带来愉快温馨的感受与体验。金属所特有的幻世感和未来主义与实木相互作用下碰撞出的音调，安静而有力量。设计中的情感因素营造出现代生活方式的烟火趣味和片刻令人陶然的小确幸。

The product integrates modern, spatial and geometric relationships. To integrate art into life, to the heart. Fun is everywhere in people's life. Pure geometrical elements constitute the simple art form of kitchen utensils, bringing pleasant and warm feelings and experiences for "kitchen". The unique illusion of metal and the collision of futuristic and solid wood tones are quiet and powerful. Emotional elements in the design create a modern way of life fireworks fun and a moment of really lucky.

GOtrend
金汐奖®

最佳生活用品
Excellent
2020

GEM 体验茶器

杭州棣凡科技有限公司



设计: defront

GEM 是一套紫砂材质的体验茶具，灵感有得于中国传统茶道。GEM 在延续了 HEI 的功能点的同时在造型加入了几何元素，使整体造型增添棱角分明之感。紫砂颜色成熟稳重，茶器放置平稳，出水口过渡自然，流水畅快，轻松享受茶香的芬芳。

Project GEM is inspired by ancient Chinese Tea Ceremony. We redesigned tea drinking and infusion process, made it adaptable by modern life. GEM tea set is an extension of experience tea ceremony, we keep the function of HEI while shaping its geometry design, which enables tea lovers enjoying best tea with minimal skill.



GOtrend
金汐奖®最佳生活用品
Excellent
2020

B-Mine

北京通元文化传播有限公司



设计：孙唱

怀揣梦想的年轻人，白天为了生活努力打拼，结束工作后也希望有家的温馨生活，但租房中的共享厨房往往无法同时满足每个人的需求。合租的人们既需要空间来收纳厨具，也需要一个专属于自己的操作台。《B-Mine》应运而生，它就像是卧室中的迷你岛台。让合租一族在结束繁忙的都市生活后，能慢下来享受专属于自己的生活。

Young people with dreams, working hard for life during the day, and hope to have a warm life after finishing their work, but the shared kitchen in the shared house often cannot satisfy everyone's demands at the same time. The tenants need personal space to store kitchenware already, also need the work station that is exclusive at oneself. B-Mine came into being, it is like a mini island in the bedroom. After the end of the busy city life, the tenants can relax and enjoy their own life.



GOtrend
金汐奖最佳空间设计
The Best of Best
2020

南元

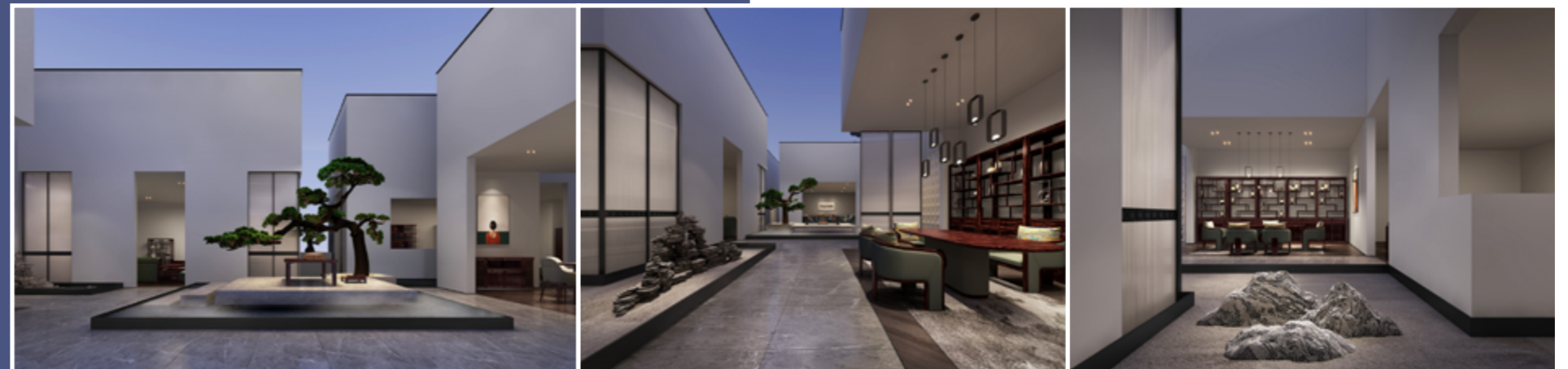
东阳市东禺红木家具有限公司



第三方机构设计：深圳觅本品牌设计顾问有限公司

南元设计秉承山水精神的思维模式，敬爱自然、环境友好。用五个独立互通的矩阵式箱体建筑，围合形成一个四合院形态。素白干净的外墙结合高位差的罗汉松绿植，达到远景消失在水天空白处的“心象”视觉体验。内部空间通过对自然的模仿，置放高山低水的景致公共空间，与展示区形成可游、可居、可行的场所。天地岁时，静而观之，无一不是自然。

Adhering to a thought patterns about "landscape spirit", Nan Yuan's works are full of the nature-respected and environmental-friendly elements. Five independent and interconnected Matrix Box-type constructions enclosed and formed a quadrangle. With the help of plain white exterior wall and the height difference of podocarps, a "Mental Image" occurred and brought us a touched visual experience. The internal spaces where placed landscape sceneries were smoothly integrated with the exhibition area through imitating of nature, a play, habitable and walkable place brings us in finite imagination. Nan Yuan follows the laws of nature that provided us tons of Nature-made artworks.



GOtrend
金汐奖®最佳空间设计
Excellent
2020

free.working

斯图雅轩(深圳)办公空间设计建造有限公司



设计：斯图雅轩设计团队

Free.working 主张创建的工作场所是“活的”，是动态地跟随着业主的需求而进行灵活组织的。带着轮子可移动的小房子、即装即用的工作站、灵活组变的沙发，系统的构成元素不单是形式上的统一，更注重办公必要功能的实现。Free.working 展示外观以代表时代科技的手机为设计灵感。线性一体天花、带格栅的弧角边棱墙与架空的功能地面，通过坚强内置钢构连接形成简洁的“盒子”，不仅响应本届展会的设计主题，又是主展示产品线的叠级关联延伸。展位的搭建，巧妙地结合“外吊”与“内撑”结构形式，确保整体的稳定安全，具有展示与支撑功能的内分隔墙，对空间内部进行分区并自然地形成展区参观动线。工厂制作，现场安装，装配式施工达到 95% 可回收循环利用，高度响应组委会要求。

Free.working advocates an alive workplace it created, which is dynamically organized with the needs of the owner. A small house with movable wheels, a workstation that can be installed and used instantly, and a sofa that can be assembled and changed flexibly, all this shows that the elements of the system are not only the unity of form but also the realization of necessary office functions. Free.working shows the appearance of a mobile phone which represents the technology of the times. Linear integrated ceiling, arc corner edge wall with grid and overhead functional floor form a simple "box" through strong built-in steel structure connection, which not only responds to the design theme of this exhibition but also is the cascade connection extension of the main display product line. The construction of the booth is combined with the structural form of "external hanging" and "internal supporting" to ensure overall stability and safety. The internal partition wall with the function of display and support divides the interior of the space and forms the visiting moving line of the exhibition area based on the natural terrain. Factory production, on-site installation, in which assembly construction can achieve 95% recyclable, highly responsive to the requirements of the organizing committee.



MATSU 玛祖铭立

上海玛祖铭立 家具（集团）有限公司



第三方机构设计 :anySCALE

TRANSLUCENT 半透明的：半透明的布料用于展览空间内外便以创造出分层的动态视觉效果。ARCHED 拱形的：拱形的开口形成一种宏伟且开放的效果，并且更加凸显出产品的展示。VIBRANT 充满活力的：用颜色强调不同空间区域的划分。

TRANSLUCENT: Translucent fabric used to create a layered and dynamic visual experience inside and outside the exhibitions space. ARCHED: Arched openings used to form a sense of grandness, openness and focus on products and setups. VIBRANT: Colors used to emphasize the different spatial set-ups.



GOtrend
金汐奖最佳灯具
The Best of Best
2020

留白

广东宝照科技有限公司



设计：蔡伟国、蔡梓华

《留白》系列灯具采用中国国画中常用到的一种艺术表现手法——白描，作为产品设计的语义，产品的特征性元素通过流畅的一笔勾勒而成，经过多次提炼调整，最终形成现在干练而又有神的形态，其内涵体现中国传统的“留白文化”。吊灯是远山的轮廓和云的交错，落地灯是山间高耸的空中楼阁，而台灯则是一棵菩提树，人在灯下，宛如在菩提树下静思。三者在家居空间中形成“远中近”的空间关系，越往高远处数级渐增，这三笔两画，赋予空间深远的想象力，人与灯共存，如同在中国画中畅游，给现代都市繁华焦躁的人们，一处属于自己的暂歇地，一段留白时光。

The “Blank-Leaving” series of lamps uses a kind of artistic expression commonly used in Chinese traditional paintings— line drawing. As the semantics of product design, the characteristic elements of the products are formed by a smooth sketch, and after many refinements and adjustments, it finally forms the present capable and spiritual shape, which reflects the traditional Chinese “blank-leaving culture”. The pendant is the intersection of the distant mountains and the clouds. The floor lamp is the aerial tower in the mountains. And the table lamp is like a linden tree. Individual under the table lamp are like meditation under the linden tree. The three form a spatial relationship of “far, middle, and near” in the home space. These several strokes and paintings give far-reaching imagination to the space. It is just like touring in a Chinese painting when people and the lamps coexist, which provides a place for the busy and restless individual of modern society to relax, and have a “blank” time.



GOtrend
金汐奖®可持续设计大奖
The Best of Best
2020GOtrend
金汐奖®最佳灯具
Excellent
2020

8- 水磨石落地灯

广州本土创造文化发展有限公司



设计：周银坤

圆无处不在，它是创造所有事物的基础关系之一，简单明了。圆是平等，它没有阶级，先后和终止。圆圈象征着自然或整个宇宙的过程，从旭日符号到天体运动，圆的趣味无穷无尽。以圆形塑切割石材垃圾废料，让它归于生活的平和中庸，是一种物的循环圆满。系列涵括衣帽架 / 茶几 / 台灯 / 落地灯与桌面摆件。扎根于中国本土加工业亟待转型发展的生产环境，以及对云浮石材行业近五年的深入接触，充分利用珠三角地区日趋精益的机械加工技术，以产品系统挑战精细化、机械化程度更高的生产模式，探讨石材『垃圾』与产业接驳的稳定闭环。而作为设计产品，造型简单，高吻合耐耗的部件，并非多此一举的水磨石棱边折角，材料上一贯用心的自然质感与抗污防撞性能。

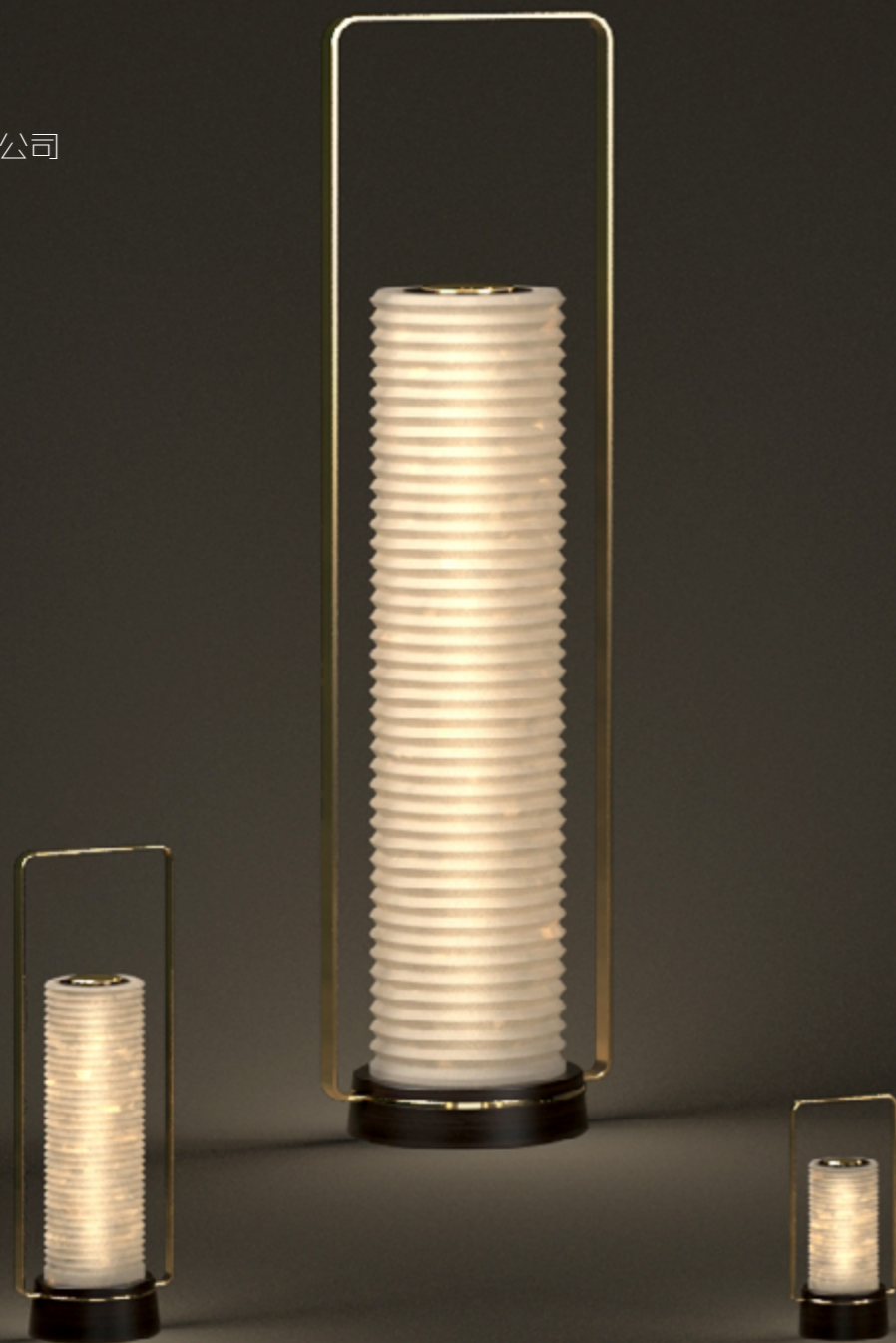
Circles are everywhere. It is one of the basic relationships that creates everything, simple and straightforward. The circle is equal, it has no class, it has a sequence and it ends. The circle symbolizes the process of nature or the entire universe, from the symbol of the rising sun to the movement of celestial bodies, the interest of the circle is endless. Cutting stone garbage waste with round plastics, letting it return to the peace and mediocrity of life, is a kind of circular perfection. The series includes coat racks / tables / table lamps / floor lamps and table decorations. Rooted in the production environment of China's local processing industry that is in urgent need of transformation and development, and in-depth contact with the Yunfu Stone Industry in the past five years, it has made full use of the increasingly lean machining technology in the Pearl River Delta region to challenge refined and mechanized production with product systems Mode to explore the stable closed loop of the connection between stone "garbage" and industry. As a design product, the shape is simple, and the parts with high wear resistance are not the folds of the terrazzo edges. The material has always been carefully designed with natural texture and anti-fouling performance.



GOtrend
金汐奖®最佳灯具
Excellent
2020

“望”

深圳市上时家居科技有限公司



设计：上时家居设计团队

点亮一盏灯等你回家。在中国，中秋代表着团圆的日子，当天夜里人们会放孔明灯，提纸灯笼，希望能给远方的亲人祈愿。灯具《望》是设计师希望通过产品勾起人们记忆深处对盼望情感的共鸣，也表达了设计师对儿时童年记忆的向往。《望》采用了金属、磨砂玻璃以及木材，灯罩面上的金属片是灯具的开关，可以触控调节灯光的明暗。灯具具有三种尺寸大小，落地灯、台灯和更小的台灯。

Light up a lamp waiting for you to go home. In China, the Mid-Autumn Festival represents a day of reunion. At night, people will put Kong Ming lanterns and paper lanterns, hoping to pray to loved ones in the distance. The lamp "Wang" is a designer's hope to evoke the resonance of hope emotions in the depths of people's memories through products, and also expresses the designer's longing for childhood memories. "Wang" uses metal, frosted glass, and wood. The metal piece on the surface of the lampshade is a switch for the lamp, which can be adjusted by touch. The lamps come in three sizes, floor lamps, table lamps and smaller table lamps.



GOtrend
金汐奖

最佳坐具
The Best of Best
2020

1900 椅

浙江理工大学家具设计中心



设计：为来设计工作室

椅子的设计灵感来自道路两旁的围栏，设计主要针对临时性的休息停靠，希望给人们带来的是一种放松自在的生活状态。三两好友，随意倚靠，轻松交谈。

The design inspiration of the chair comes from the fence on both sides of the road. The design is mainly for temporary rest and parking, hoping to bring people a relaxed and comfortable life. Three or two good friends, lean on at will and talk easily.



GOtrend
金汐奖®最佳坐具
Excellent
2020

MOA MOA

SDE lab



设计：柳毅

该件坐具是对胶合板使用的再度探索，通过两片胶合板的巧妙组合搭配，两个独立的弧度组合形成了一个更加具有包裹性的支撑空间，搭配曲线柔软的实木框架，能够更好的营造家居的温暖之意，此外坐靠部分也可以通过更换不同的底部支撑设计以满足不同的使用情境需求。

The seat is a re-exploration of the use of plywood. Through the clever combination of two pieces of plywood, two independent radians combined to form a more enveloping support part. With the curved soft solid wood frame, it can better create the warmth of the home. In addition, the seat part can also be replaced with different bottom support designs to meet different uses of Situational needs. The unique design of MOA MOA can bring a bit of ease to contemporary stereotyped life.



GOtrend
金沙奖®

最佳坐具
Excellent
2020

Zafra
Marmo

设计 :Lodovico Bernardi

扶手椅柔软而坚实，和谐地融合木材、金属和织物材质。无论是否有头枕，zafra 都适合运用在小型的居家或公共空间，您可以依靠着它轻松阅读、品尝咖啡或享受小憩片，彻底放松一下

Softness and solidity meet in the Zafra armchair, which harmonically combines wood, metal and fabric. Available with or without headrest, Zafra is thought for small domestic and work spaces. It offers an island of comfort to dive into to read, sip a coffee or simply enjoy a moment's rest.



GOtrend
金汐奖最佳全屋解决方案
The Best of Best
202018m² 就够了!

海蒂诗五金配件(上海)有限公司



设计: 海蒂诗

居住在 18m² 的小空间。对于一些人而言，这是一种前卫的生活理念，而对于另外一些人而言则是别无他选，因为大城市寸土寸金、住宅空间有限。如果说海蒂诗在 2018 年深圳展会中参与的 18m² 极小空间挑战赛是对小空间设计的初次关注与探索，那这次全新升级的 2.0 版本的 18m² 住宅则是对当下城市小户型的深度思考与理解后的设计呈现。海蒂诗秉承“Fascin[action]—赢取空间、享受舒适、感受风格”的理念，展示居住在紧凑空间中的非凡体验，带来更多舒适度与设计上释放的亮点，在充分利用空间的同时从人居的生活习惯和实际需求出发通过解决方案将人居理念发挥到极致。

Living in 18 m2. For some a life concept, for others a necessary decision because housing in towns and cities is scarce and expensive. In 2018, Hettich expressed its new attention and attempt to explore small space design at Shenzhen Creative Week by participating in the 18 sqm tiny space challenge. Now Hettich is ready to present our upgraded 2.0 version of 18 sqm home, with a design representing intensive thoughts and understanding of the urban tiny living space. Working by the concept of Fascin[action]---to “feel style, enjoy comfort and win storage”, Hettich offers a fascinating experience in living in a space conscious room but still managers to enjoy delights and pleasure brought by the design whose solution makes the most efficient use of the space while respecting the living habits and the practical needs of the users to create a premium residence.



GOtrend
金汐奖最佳全屋解决方案
Excellent
2020

仁豪新中式

仁豪家居



设计：王永刚

东方气韵，中国生活 新中式旨在营造富有东方气韵的生活空间，难点在于如何将传统文化与现代文化生活结合，文化的相互交融。新中式定制家具设计结合了仁豪家居在技术与材料上面的优势，导入板木结合工艺，而且依照现代人的居住空间布局，审美需求及功能需求打造而出，摒弃繁冗复杂的造型与修饰，以删繁去简的手法引入美好意境，清新雅致，干净而美好。稳重而不失灵动，将文化韵味缓缓表露。充满文艺气息，亦为空间增添时尚个性的不俗品味。

Oriental charm, Chinese life The new Chinese style aims at creating a living space full of Oriental charm. The difficulty lies in how to combine traditional culture with modern cultural life, and the mutual integration of culture. Custom of new Chinese style furniture design is a combination of RenHao home advantage on technology and material, wood import board combined with technology, and in accordance with the modern living space layout, aesthetic demand and function demand to build out, slam the door is rather complex modelling and decoration, to delete the technique into beautiful artistic conception of numerous to Jane, pure and fresh and elegant, clean and beautiful. Sedate and do not break clever, will cultural lasting appeal slowly reveal. Full of literary atmosphere, also add fashionable personality for the space not common taste.

GOtrend
金汐奖最佳全屋解决方案
Excellent
2020

造极

陕西南洋迪克家具制造有限公司



设计：南洋迪克

造极系列全屋定制系列以产品使用者的角度出发，根据市场和消费者的个性化需求，引领居家环境专属定制潮流。造极全屋定制系统的创意主要体现在使用功能和设计巧妙的细节上，从研究用户心理学的角度出发，模拟用户居家体验过程，以个性化、私享化、多样化的需求为品质生活保驾护航，采用人机工程学的尺寸做为数据支撑，保证设计空间与客户品位的完美贴合，因地制宜，量身定制为客户打造爱居。多功能的墙面系统和自由模块化的设定，柜体不仅功能丰富而且实用得当，再搭配造极系列活动家具，营造出居家典雅、舒适现代的氛围。

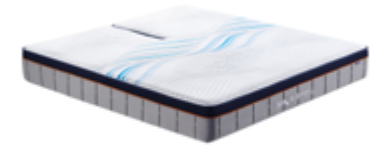
Neodiko house custom series for the product users point of view, according to the market and consumer's personalized needs, leading the home environment dedicated custom trend. The creativity of the whole house customization system is mainly reflected in the use function and the ingenious design details. From the perspective of user psychology, it simulates the user's home experience process, escorts the quality of life with personalized, personalized and diversified needs, and uses the size of human engineering as the data support to ensure the perfect fit between the design space and the customer's taste Tailored to suit the needs of customers. With multi-functional wall system and free modular setting, the cabinet is not only functional but also practical and appropriate. In addition, it is equipped with series of activity furniture, creating a home elegant, comfortable and modern atmosphere.





图灵 -03

香港舒是家居用品集团有限公司



设计：舒是智能家居研发部

舒是 AI 智慧云睡眠系统 舒是 AI 智慧云睡眠系统功能特点： 软硬随心调节 通过气流平衡系统，实现左右两边 15-100 档自由软硬调整，防霉抗菌； 智能检测，缓解打鼾 智能检测打鼾频率、进行干预性缓解打鼾； 健康互联，睡眠意外预警 通过数据随时了解睡眠状况，了解身体健康，防患于未然。实现老人、孩子离床远程预警； 高低调整，促进血液循环 一键选择，多重释压。具有零压力、电视、手机、舒适、私人订制等多种模式选择； 多段调节，完美支撑 实现多段调节，分别调节身体颈部、腰部、腿部的承托，尽享舒适睡眠； 牵引理疗，缓解腰颈疼痛 采用颈部腰部牵引程式，反向作用原理提供腰部和颈部牵引，放松肌肉、缓解疼痛。智能语音，健康睡眠交互 使用 APP 智控，通过语言控制床垫调节，适用更多人群。

Introduction to Jinxin Award Shushi AI Intelligent Cloud Sleep System Shushi AI Intelligent Cloud Sleep System has held the following functional characteristics below: Hard and Soft with a Free Regulation The device can achieve a soft and hard free adjustment within the level of the left and right sides of 15-100, through the airflow balance system, being with the properties of the anti-mildew and anti-bacteria. Intelligent Detection to Ease Snoring The device can conduct an intelligent detection of snoring frequency and intervention to alleviate snoring. Health Interconnection, Sleep Accident Warning The device can realize the inspection on the sleep status through the data wat any time to know well the health in advance, in which the remote warning for the elderly and children can be carried out. High and Low Adjustment, Improve Blood Circulation The device can realize the multiple pressure release with zero pressure by using one key selection, in which the modes of choices of TV, mobile phone, comfort, private custom and other services can be satisfied. Multi-stage Adjustment, Perfect Support The device can achieve multi-stage adjustment, such as adjust the body neck, waist, leg support, to enjoy a comfortable sleep. Traction Physiotherapy, Relieve the Pain in the Lower Back and Neck The cervical and lumbar traction program for the device can be used, in which the reverse action principle can be provided for the lumbar and neck traction to relax muscles and relieve pain. Intelligent Voice, Healthy Sleep Interaction By using the intelligent control APP, the bed mattress can be adjusted by language, which is suitable for more groups of the users.



昱 -

太阳能无线户外庭院灯

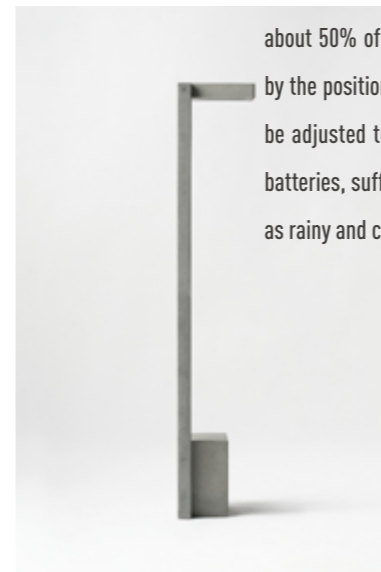
广州本土创造文化发展有限公司



设计：何良宇

取名“昱”，日光、光明、照耀，本意新的一天，亦作未来。市面上绝大多数太阳能灯设计停留在仅满足功能的阶段，无法满足日益提升的生活审美水平，一定程度上阻碍太阳能在家居庭院的应用普及。造型灵感来源于现代建筑，外观线条简洁明朗，去除一切形式上的多余；“昱”的电池板暗藏于灯体造型中，发挥着将太阳的辐射能力转换为电能，或送往蓄电池中储存的重要作用。整个外壳均采用约 50% 的建筑回收废渣混凝土；无需插电，不受电源位置限制；旋转按钮可调节亮度；灯头角度可调节，方便调整采光位置；内置芯片设置了节能模式，配合使用兼顾直射光、弱太阳光的太阳能板；配合大容量电池，在闲置的期间获取充足的电量，以对应连续雨天、阴天等弱光天气。

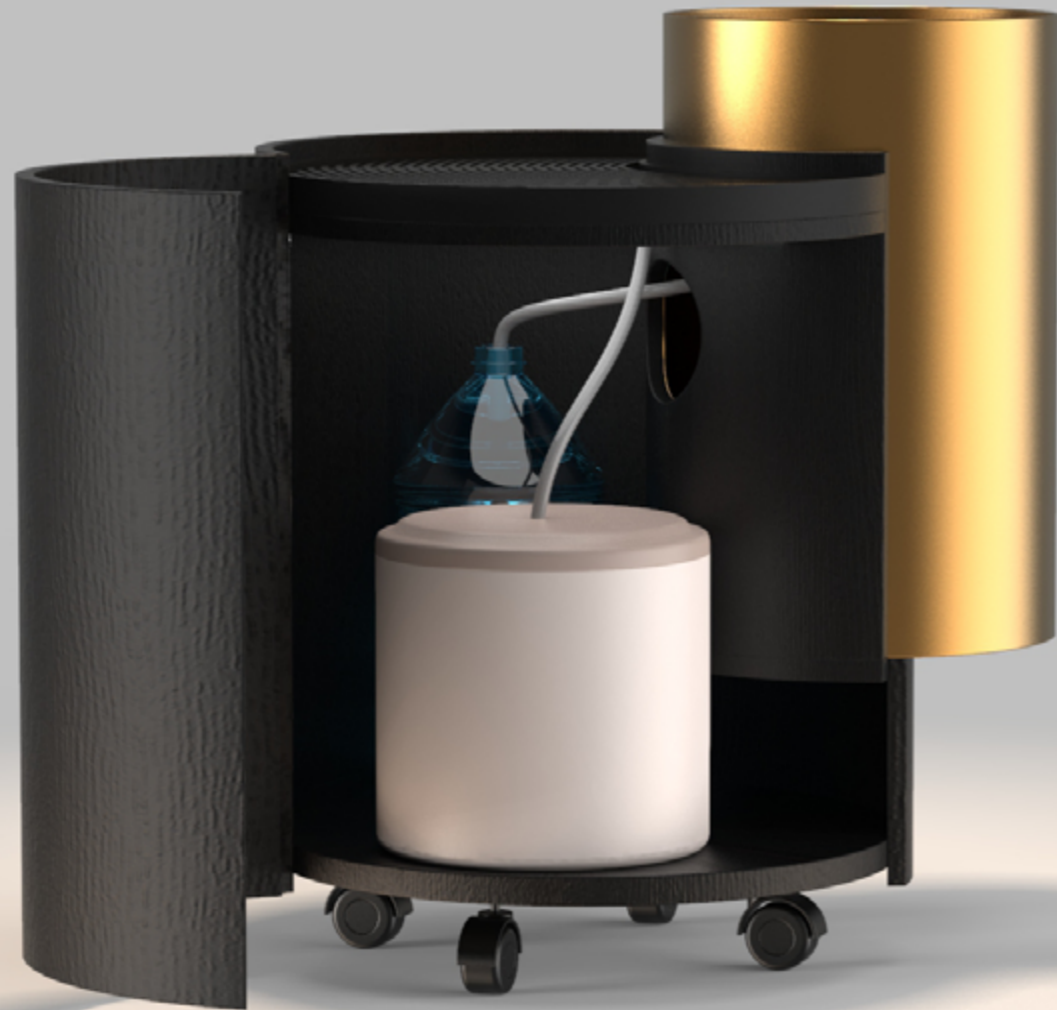
Named "Yu", daylight, light, and shine. A new day is meant for the future. The vast majority of solar light designs on the market stay at the stage of only satisfying functions, failing to meet the increasing level of living aesthetics, and to some extent hinder the application of solar energy in home courtyards. The modeling inspiration is from modern architecture, and the appearance is simple and clear, eliminating all forms of superfluity; "Yu" 's battery board is hidden in the shape of the lamp body, which plays the role of converting the sun's radiant power into electrical energy, or sending it to the battery Important role. The entire shell is made of about 50% of the recycled construction waste concrete. It does not need to be plugged in and is not restricted by the position of the power supply. The rotary button can adjust the brightness. The angle of the lamp head can be adjusted to facilitate the lighting position. Solar panels with light and weak sunlight; with large-capacity batteries, sufficient power is obtained during idle periods to correspond to continuous low-weather weather such as rainy and cloudy days.



GOtrend
金汐奖最佳智能产品
Excellent
2020

小明茶水车

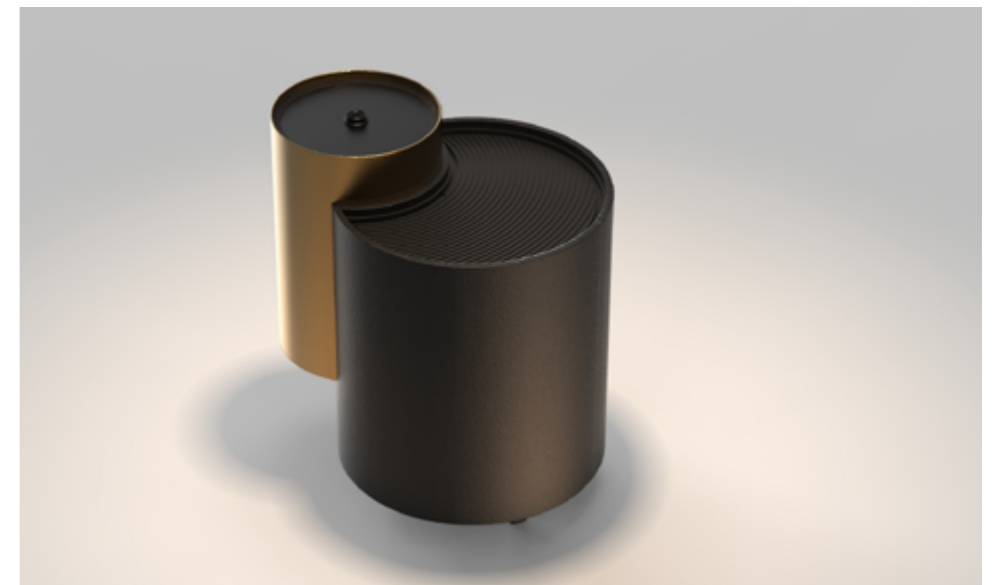
浙江茶荟美茗家居有限公司



设计：王世超

《小明茶水车》由两个材料、大小各不同的圆柱体通过咬合关系而生成，金属桶上配备了嵌入式智能煮茶器、轻松操作、自动煮茶，泉涌式底部上水等特点。同事木桶上安装了乌金石茶盘，泡茶时的废水可以从这里倒掉，流入底部的废水桶里，饮用水桶也可以放置在木桶内，整个茶水车集合了泡茶需要的上水、烧水、下水功能，同时底部的滚轮可以使茶水车自由移动，整体设计现代简洁时尚，并结合了具有科技感的语音提醒泉涌式上水器，更加符合现代人的审美与使用需求。

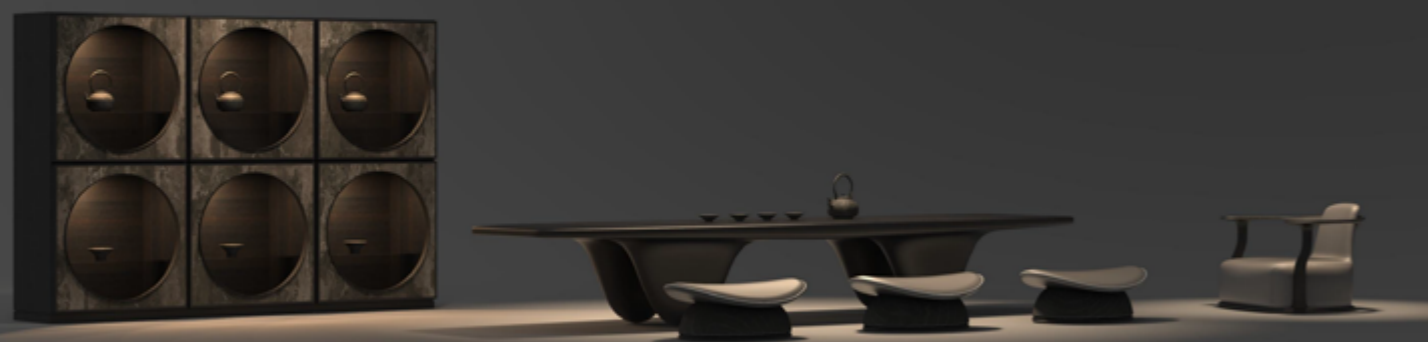
The "Sun&Moon" tea cart is made of two cylinders of different materials and sizes. The metal barrel is installed with equipment that can supply water and boil water at the same time. The wooden barrel is equipped with blocks tea plate. The waste water during tea making can be poured out from here and flow into the waste water bucket at the bottom. The drinking water bucket can also be placed in the wooden barrel. The whole tea cart gathers the water supply, water heating and launching function needed for tea making, and the roller at the bottom can make the tea cart move freely. The overall design is modern, simple and fashionable, and combined with spring water feeder with the function of voice reminder, which is more in line with the aesthetic and usage needs of modern people.



GOtrend
金汐奖最佳服务案例
The Best of Best
2020

茶荟 × 为来 茶家具设计

浙江理工大学家具设计中心



为来工作室 × 茶荟

设计：为来设计工作室

浙江茶荟家居有限公司是顾家家居旗下 2019 年新成立的茶家具品牌。茶荟希望用现代的设计手法表达与茶有关的家具造型，以此将茶的文化带入更加年轻一代人们的生活中。为来设计工作室作为茶荟成立初期创意团队中的一员，截至 2019 年底，已经为其设计了 20 余件茶室家具产品。

Zhejiang chahui Furniture Co., Ltd. is a brand of tea furniture newly established in 2019 under kuka furniture. Chahui hopes to use modern design techniques to express the furniture modeling related to tea, so as to bring the tea culture into the life of the younger generation. Wellife design studio as a member of the creative team in the initial stage of Chahui, by the end of 2019, more than 20 tea room furniture products have been designed for it.





瓦

广州乐高建筑科技有限公司



设计：深圳市矩阵室内装饰设计有限公司

打破传统墙面的设计，乐高树脂玻璃轻薄，易于弯曲的特性。让墙面变得与众不同。在空间的虚实关系制造视觉层次，更具流动感。

Breaking the traditional wall design, Lego resin glass is light and easy to bend. Make the walls different. In the space of virtual and real relations to create a visual level, more dynamic flow.

GOtrend
金汐奖最佳服务案例
Excellent
2020

看风景的别墅

宅度设计装饰工程（深圳）有限公司



设计：宅度设计装饰工程（深圳）有限公司

这栋别墅之所以称为“看风景的别墅”，是因为设计的时候故意把西北面临近江南大道的地面做了抬高，成为地景建筑。希望和快速路保持距离的同时，能够眺望大道对岸的惠州东江江景。抬高的举措带来许多好处：

- 1、满足了绿化率的同时，增加了使用面积；
- 2、降低了4层高别墅的体量感；
- 3、将地块分成南北两个院落，南院安静，是内部家庭生活的核心区，北院可以远眺江景。抬高的地景建筑和主体建筑之间，以一个两层高，顶上采光，两侧实墙盒子作为连接体，这是别墅的入户空间。进入这个空间，可以感受到不一般的回家感受：高大的空间，穿透的视线，变幻的光影，墙上挂满了各种当代艺术品 ... 这个项目我们从建筑到室内设计到家具设计，实现了全过程服务。

The reason why this villa is called a "view villa" is because the ground was intentionally changed from the northwest to Jiangnan Avenue in the design to become a landscape architecture. I hope that while keeping a distance from the expressway, I can overlook the Huizhou Dongjiang River view across Hu Avenue. The raised projection brings a lot of benefits:

- 1, while satisfying the greening rate, increasing the use area;
- 2, reducing the sense of volume of the 4-storey villa;
- 3 separating the plot from the north and south courtyards, the south courtyard is quiet, is In the core area of the family life, the north courtyard overlooks the river. Between the elevated landscape building and the main building, a two-story building with daylighting on the top, and adjacent solid wall boxes as the connection body, this is the home space of the villa. Entering this space, you can observe the unusual home feeling: tall space, penetrating sight, changing light and shadow, which are filled with various contemporary artworks ... In this project, we have realized the whole process service from architecture to interior design to furniture design.



POP

北京沃科系统科技有限公司



设计：杨嵘劫

POP 用简单而富有创造力的方式，为办公区域开辟出一小块珍贵的安静空间。它是装饰，更是工作中的片刻抽离。进入 POP 打电话时，吸音材质会让你的说话内容得到保护。镶嵌在中央的透明条也保留了对外界的视觉观察，给使用过程增添安全感。

—

POP provides a precious quiet space in an open plan office in its simple but creative way. Hanging from the ceiling, it seems like a decoration, but more importantly, it leads to a moment of detachment from work. When you make a call in POP, the acoustical sculpture builds a safe space for your conversation, while a transparent strip allows unobstructed views out.



SOK

广州莱特斯家居有限公司



第三方机构设计 :lightspace

SOK 来源于 Social Office Kitchen，也就是社会 - 办公室 - 厨房。它是一款办公桌系统，但同时它又打破常规，可以适用于三种不同空间。既可以为单一的空间，提供多方位的使用体验，又或是可以成为不同空间必需产品：娱乐、办公、休闲……它的特色就在于极大的灵活性。隔断屏、容器、装配好的墙壁和感应板是其附件，通过这些附件可以随意配置 SOK 系统。创新的扇形隔断可以“打开和关闭”，与木制容器一起立即建立两个空间之间划分。从工作区到用餐区，到私人区，还有……为什么不在几个简单的动作中变成娱乐区呢？丰富的配件、完善的结构，毫无疑问，使 SOK 系列进一步灵活，并可定制于每个环境。

SOK, (Social Office Kitchen) is a table system which contains together the necessities of three different spaces in a single project that aims to the everyday conviviality... office, home and coffee bar. The main word is maximum flexibility. Screens, containers, equipped wall and the induction plate are its accessories through which it is possible to configure SOK at will. The innovative screens "open and close" and fan-shaped together with the wooden containers allow an immediate division between the two spaces. It is possible to pass from a working area to a dining area, to a privacy one and, why not, to a convivial one in a few simple movements. Aside from its accessories, the finishing of its plans and its structure are, without doubt, what make SOK further flexible and customisable to every environment.





VMLY&R 北外滩办公室

上海玛祖铭立家具（集团）有限公司



设计：上海玛祖铭立家具（集团）有限公司

全球最大的广告集团 WPP 宣布，旗下 VML+ Y&R 合并。重组后的 VMLY&R 于近日搬迁于北外滩的新办公室，MATSU 为其打造办公家具解决方案。VMLY&R 的新址位于北外滩光大安石中心，三层楼的新办公空间能够容纳五百余人办公。一楼整个吧台区域以金色为基调，Volpino 休闲椅、Uni_verso 沙发、Velax 沙发提供不同的休闲姿势，可一人冥想，也可多人协谈。休闲区和办公区并没有过于明显的分界，这和规划清晰的动线密不可分，传递舒适的办公生活方式理念，整个楼宇中也分布着大大小小的会议室。对应空间中的家具选择也极具代表性：圣杯造型的 Njord 休闲椅，轻盈曲线感设计与毛毡混搭的外观极具视觉冲击力；Uni_verso 休闲椅一贯舒适，简洁设计为空间留足自适的体验感；带有两只“触手”的 Tea 休闲椅看起来趣味横生。

The biggest advertisement group, WPP, announced that its VML merges with Y&R. VMLY&R relocated moved to its new office, where MATSU was invited to provide furnishing solutions. New office is in EBA CENTER in North Bund. It has three storeys and can accommodate more than 500 persons. Gold color is the main color, with volpino, universo and velax providing possibilities of different relaxing attitudes. People can think and talk. We didn't divide leisure area and working area with distinctive boundaries this time, trying to create a comfortable office life. This building also has conference rooms in various sizes. Furniture using is also carefully arranged: Njord chair is of Grail image, which creates visual impact with its graceful outline and felt quality; Universo chair is comfortable as always, which is simple in design but adapts to various space; Tea chair has two "tentacles", which symbolizes innovation and inspiration as well as delicate designs.



GOtrend
金汐奖

明日之星
The Best of Best
2020

柳毅

SDE lab

MOA MOA

Working experience:

Product design for Hasbro

(Shenzhen, Hongkong, Rhode Island)

2010-2015

Product design for Thermador (North Carolina)

2011-2014

Faculty in Shunde Polytechnic

2015 to present

Faculty in WuYi University 2017 to present

Furniture Design for SDE lab

2019 to present

Achievements:

Red dot awards 2018, 2019

If awards 2017, 2018

K-design awards 2018, 2020

3rd Award in China Universities Industrial Design Competition Chinese region

2nd Award in Gornernor Cup Industrial Design Competition

Works exhibited in High point Furniture exhibition 2013, Guangzhou design week 2011, Design Shanghai 2020, Shenzhen design week 2020

Co-writer of Textbook "Furniture design"

More than 20 awards for guiding students' works

Published 3 academic papers



GOtrend
金汐奖

年度设计师/团队
The Best of Best
2020

浙江理工大学家具设计中心

为来设计工作室

Furniture design institute of ZSTU(wellife design studio)



为来设计工作室是浙江理工大学与为来科技（杭州）有限公司共同孵化的家具设计工作室，由国内资深家具设计师和浙江理工大学教授、学生组成，为行业提供家具设计服务。

我们对自己的服务内容和风格不设限，愿意接受各种挑战，希望为行业带来新鲜的设计创意。

2017 - 为来设计工作室成立

2018 - 参加上海米兰家具展卫星展 / 东莞家具展

2019 - 成立原创现代家具品牌“栖间”，杭州第六空间和红星美凯龙双店开业

2020 - 参加深圳国际家具展，获得金汐奖最佳坐具、最佳服务案例、最佳年度设计团队三项金奖



- 扫码关注 -
官方公众号
金沙奖官网
www.gotrend.cn

平台支持:  SHENZHEN CREATIVE WEEK 深圳时尚家居设计周
SZFA SHENZHEN FURNITURE ASSOCIATION 深圳国际家具展览会

资源支持:  深圳市家具行业协会
SZFA SHENZHEN FURNITURE ASSOCIATION

学术支持:  SHENZHEN FURNITURE DESIGN INSTITUTE 深圳家具
设计研究院